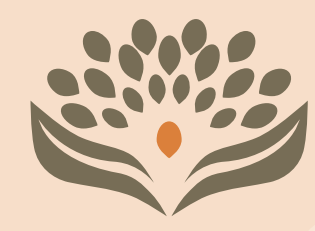
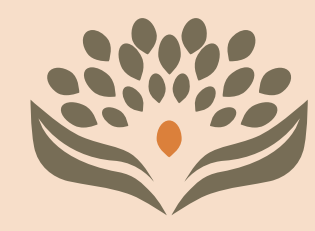


SKI works at all levels recognising the power and agency of grassroots actors, in particular farmers, and their rights and roles in creating lasting change which leaves no one behind.

SKI's collective action and shared learning supports grassroots knowledge and activism for community mobilising and enabling policy changes from the local to international level.



SKI's work in **building a movement for agroecology and farmer-led seed systems** aims to influence policy and practice so that agroecology becomes increasingly widespread and contributes to the resilience of wider ecosystems and food systems in the face of climate change and associated socio-economic and political impacts.



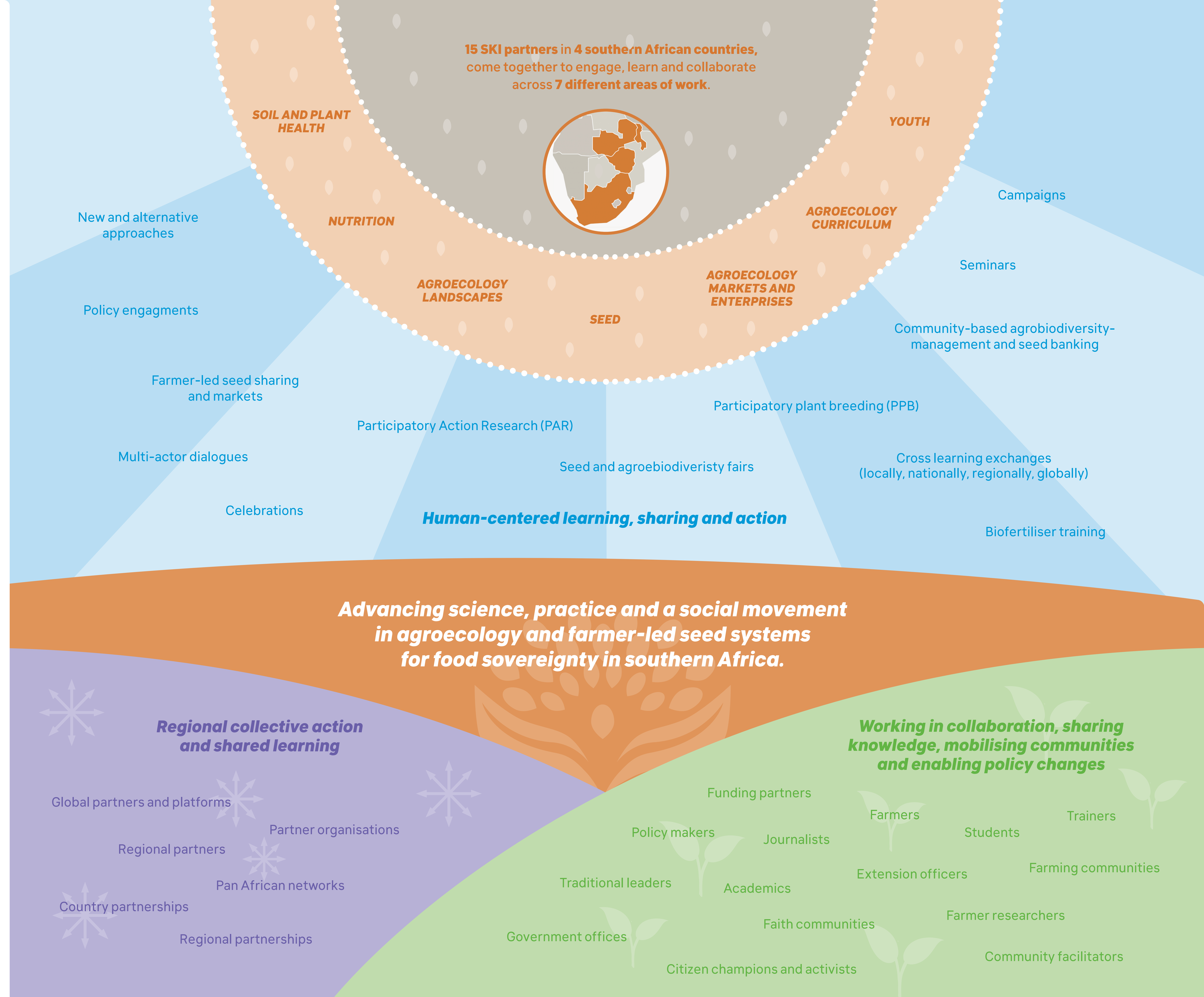
SKI works to include the 15 partners of the initiative and **reaches out to broader networks and organisations in the region, on the continent, and globally** to strengthen regional, continental and global movement building.

A key focus is **amplifying advocacy** for policy that promotes and supports farmers' rights at national, regional and global levels. This work is farmer-led, and is grounded in farmers' voices and farmer participation.



SKI partners **work closely with smallholder farmers** – mostly women – across the four SKI countries (Zambia, Zimbabwe, Malawi, South Africa, Zambia and Zimbabwe).

Partners work with these farmers to **become more seed, food and nutritionally secure** through **strengthened farmer-led seed systems**, improved crop diversity in the broader framework of **agroecology**, and the **revival and strengthening of local knowledge systems**.



SKI 
Seed and Knowledge Initiative

